

This way, please.

NEW
DINO 190XTE

Step inside for better productivity.
Meet the trailer with 250 kg basket capacity.



Spacious basket with easy-entry gate.
Lifting point for 250 kg load underneath the basket.

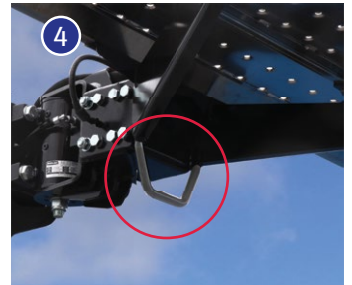
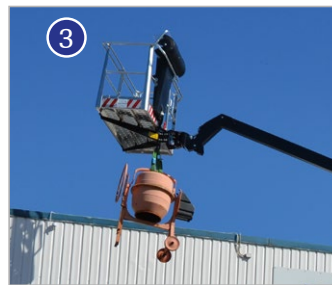
NEW

DINO 190XTE

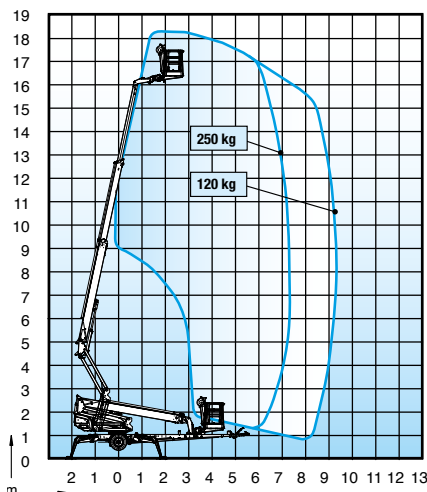
DINO 190XTE

Introducing the new trailer-mounted DINO 190XTE work platform with an impressive 250 kg basket capacity.

- Easy-entry gate for improved user comfort and access (picture 1).
- Hydraulic basket rotation 180°.
- Spacious aluminum basket 0.8 x 1.8 m (picture 2).
- Lifting point underneath basket enabling material lifting up to 250 kg (picture 3 and 4).



Technical data



Max. working height	18.40 m
Max. platform height	16.40 m
Max. outreach	7.3 m / 250 kg 9.3 m / 120 kg
Support width	3.9 x 4.3 m
Basket capacity	250 kg
Basket size	0.8 x 1.8 m
Boom rotation	continuous
Basket rotation	±180° hyd.
Boom control	proportional
Transport length	7.48 m
Transport width	1.95 m
Transport height	2.46 m
Weight	2400 kg
Power source	230 VAC 2.2 kW / Power pack 3.7 kW (option)
AC socket in the basket x 2	std
Basket load sensor	std
Automatic leveling	option
Gradeability	25 %



Technical specifications are subject to change without prior notice.

DINOLIFT

Up to the Job

Dinolift Oy
Raikkolantie 145 • FI-32210 LOIMAA • FINLAND
Tel. +358 (0)20 1772 400 • Fax +358 (0)2 76 27 160
www.dinolift.com